



# PARMAR

METALS PVT. LTD.

## INTRODUCTION



*Parmar Metals Pvt. Limited (P.M.P.L.) the name which is trusted by our valued customers and the leader amongst the perforation companies in India is established in the year 1983.*

*The Company is engaged in the business of manufacturing of wide range of perforated as well as expanded metal products.*

*The Company is situated at Survey No. 207, Veraval (Shapar), Rajkot in the state of Gujarat (India). Having two Factory Buildings with a total built up area of 8000 sq.m. both the factories are equipped with modern high tech machineries alongwith enthusiastic skilled work force of 135 employees.*

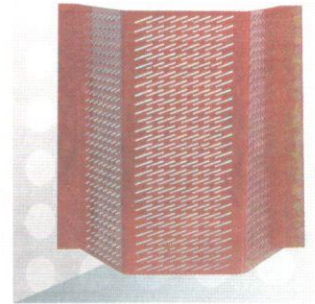
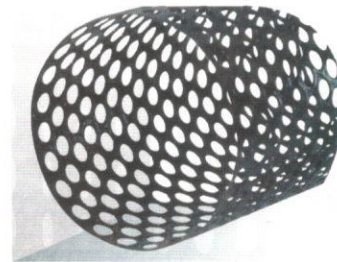
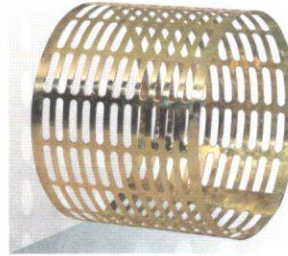
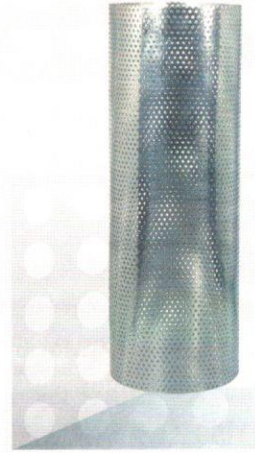
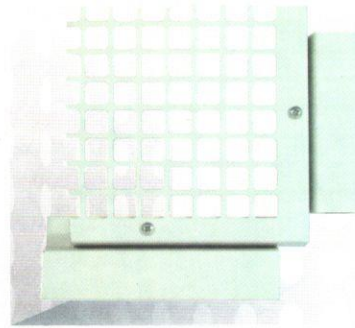
*The initial principal business of the Company involved manufacturing and trading of sheet metal products. Today, Company's business is successfully spreading in private as well as government sectors like Service, Defence and Railways.*

*The Company assures and provides quality products at competitive rates, prompt delivery and efficient service which have become the contributory factors to capture a major local market share and establish a strong industrial export market position.*

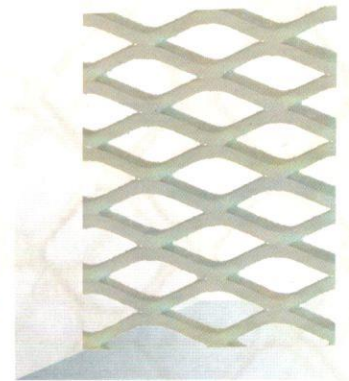
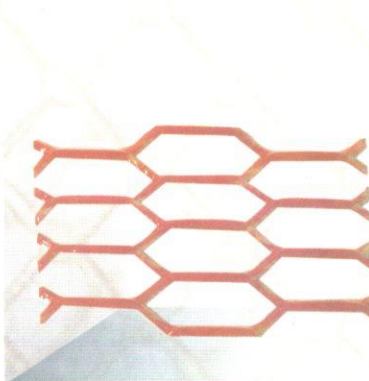
*The Major Products range Manufactured by PMPL :-*

- 1) Perforated Metals for Multiple Applications.*
- 2) Expanded Metal Sheets.*
- 3) Cable Trays-Perforated & Ladder Type.*
- 4) Steel Channels for Cable Support System.*
- 5) Filter Core.*
- 6) Telecom & Power Structures.*
- 7) Earthing Flat, Pipe and Bar*

## PERFORATED METALS

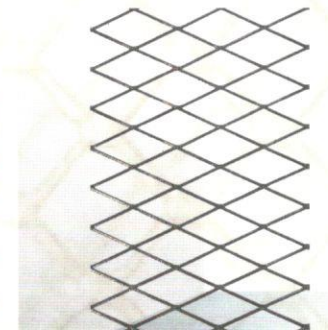
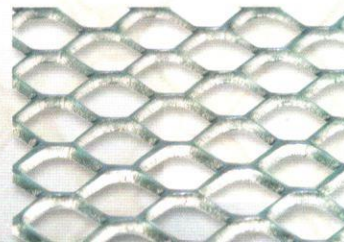


## EXPANDED METAL SHEETS.

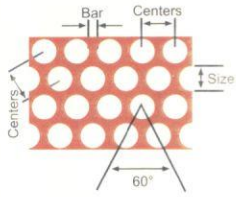


Walkway Mesh

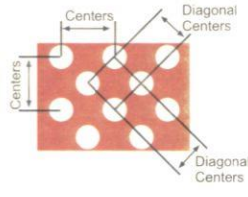
Mild Steel Flattened Expanded Metal



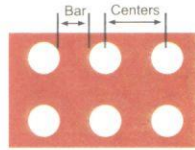
## Hole Patterns



60 Deg Staggered Round Hole



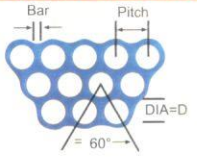
45 Deg Staggered Round Hole



Square Round Hole

The 60 Deg staggered pattern is the most popular hole arrangement due to its wide range of open area and inherent strength

## Open area calculation

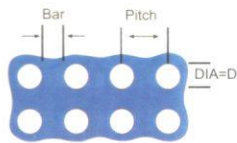


60 Deg Staggered Pitch

$$\% \text{ OPEN AREA} = \frac{\pi d^2}{P^2 \sin 60^\circ} \times 100$$

$$= \frac{0.7854}{0.8660} \times \left(\frac{d}{P}\right)^2 \times 100$$

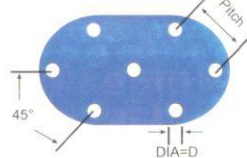
$$= 90.69 \left(\frac{d}{P}\right)^2$$



Square Pitch

$$\% \text{ OPEN AREA} = \frac{\pi d^2}{P^2} \times 100$$

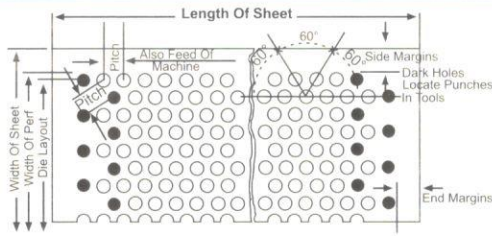
$$= 78.54 \left(\frac{d}{P}\right)^2$$



45 Deg Staggered Pitch

$$\% \text{ OPEN AREA} = \frac{\pi d^2}{P^2} \times 100$$

$$= 78.54 \left(\frac{d}{P}\right)^2$$



**PERFORATIONS:** Can be diamond, round, square, elliptical, countersunk, burred, lipped, specially shaped, or slots that have round or square ends.

**MATERIAL:** In addition to Iron and Steel, we perforate Aluminium, Brass, Bronze, Copper, Cloth, Zinc and Tinplate, as well as Paper, Hardboard, Plastic, Rubber, Nickel, Stainless Steel, Monel and Precious Metals.

**COILED PERFORATED MATERIAL:** Coils up to 5 tonne (7 tonne in special cases) in weight having core diameters ranging from 25mm (1"), widths up to 1270 mm (50") and metal thickness of 2 mm (.080") can be ordered. Plain margins can be produced along the edge of the coil. Unperforated areas can be provided across the width of the coil at required spacings although in some cases it may be necessary for them to be a multiple of the pitch being perforated. We can supply in coil form, or in lengths cut to size from it.

**QUOTATIONS:** To enable us to quote accurately on your specific requirements, we request that all information should be accordingly supplied as per requirement as stated in the General Ordering Information section be supplied.

**MARGINS AND BLACK SECTIONS:** Any approximate size may be left where required, the cost varying according to circumstances.

**FINISHES:** Galvanised, Painted, Anodised, Plastic Coated, and various special finishes.

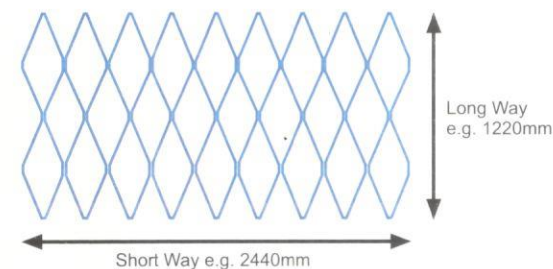
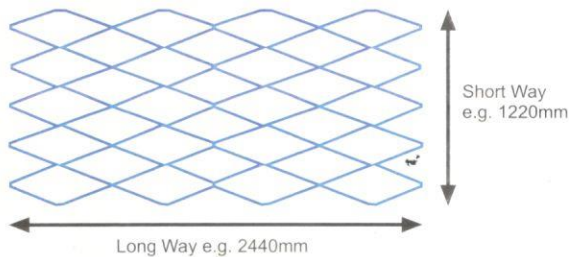
**PRODUCT RANGE :** Sheet Thickness From 0.15mm Upto 10mm Hole Dia From 0.5mm Upto 75mm Maximum Width Size Upto 1300mm.

## BUYERS GUIDE :

When Ordering It Would Be Help full If You Could Give Us

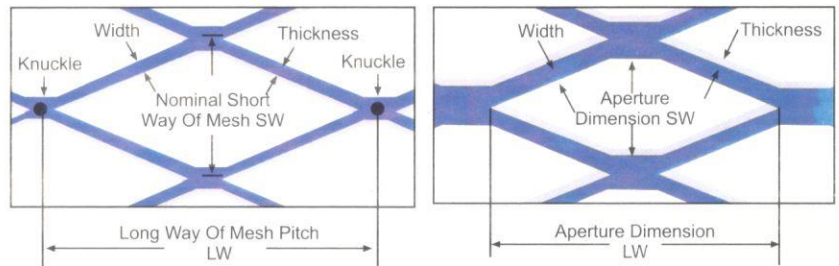
- 1) Material Type
- 2) Sheets Size Or Coil Width
- 3) Quantity Of Sheets And Length Of Coil
- 4) Raised Or Flattened Mesh
- 5) Additional Processing Or Special Finishes?  
(Galvanised, Anodised, Powder Coated, Plastic Coated)

## SHEET MEASUREMENTS :



## RAISED (CONVENTIONAL) MESH DIMENSIONS

Raised (conventional) Mesh: Standards Are Measured From Knuckle To Knuckle



**FLATTENED MESH DIMENSIONS :** Flattened Mesh : Mesh Which Has Been Pressure Rolled, Resulting In Stands Which Are In The Same Plane As The Sheet

## GLOSSARY OF MESH REFERENCE SUFFIXES

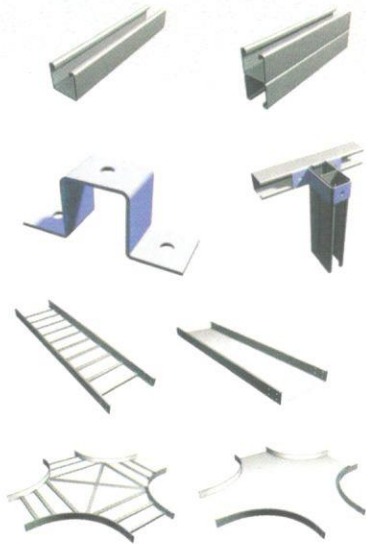
A Aluminum Ti Titanium S Stainless Steel M Monel  
C Copper Ds Nickel Alloy B Brass Pv Plastic Mesh  
Ch Corrosion And Heat Resistant Tgc Tight Coat Galvanised  
F Flattened I.e. Af = Aluminum Flattened Etc.

## GLOSSARY OF TABLE SUFFIXES

LWA Long Way Aperture (Length Of The Diamond For Flattened Mesh Only)  
SWA Short Way Aperture (Height Of The Diamond For Flattened Mesh Only)  
LWD Long Of The Diamond (Measured From The Point To Point Horizontally)  
SWD Short Of The Diamond (Measured From The Point To Point Vertically)  
Swdt Stand With  
Stk Stand Thickness (Material Thickness)  
Kgm2 Kilograms Per Meter Squared  
% Open Area % Of Sheet Which Is Open

**PRODUCT RANGE :** Thickness From 0.2mm Upto 5mm Mesh Size SW Dia From 0.5mm Upto 100mm Maximum Width Size Upto 2500mm. Apart From The Above Range,

# PERFORATED & LADDER CABLE TRAYS



**Cable Trays, Accessories & Supporting System:**  
For Rapid and Efficient fixing of Electric Wires and Cables.

**Materials:**

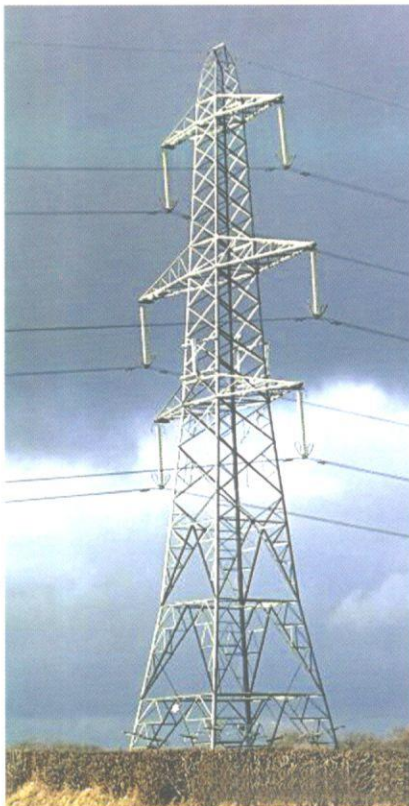
Mild Sheets, Stainless Sheets, Aluminum Galvanised Mild Sheets and Brass Sheets.

**Finishes:**

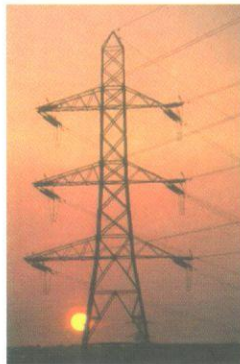
Galvanised, Plastic Coated ( Various Colours ) Red Oxide Painted, Epoxy Coated, Self Colour, Stand off Bracket - Mild Steel Jali.

*We Undertake Any Type Of Perforated & Expanded Metal Jobs And Structural Works As Per Customer's Specifications And Drawings By Developing Tools & Dies At Our In-House Tool Room Facility*

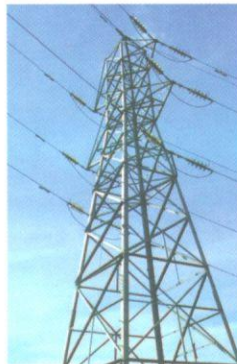
## POWER AND TELECOMMUNICATION STRUCTURE



*Transmission Tower*



*Microwave Tower*



*Transmission Tower*



*Substation Structure*



## PARMAR METALS PVT. LTD.

Office : 28-A, Bhaktinagar Ind. Estate, Rajkot 360 002. INDIA.  
Ph. : #91 281 2362257 Fax : #91 281 2365240

Factory : Survey No. 207, VERAVAL (Shapar), Dist. Rajkot-360 024, INDIA.  
Ph. : #91 2827 252888 Fax : #91 2827 252889

