



PARMAR
METALS PVT. LTD.



- Earthing Pipe ●
- Earthing Rod ●
- Earthing Plate ●
- Earthing Bag ●
- Copper Strip ●
- Earthing Strip ●
- Copper Plate ●
- Earthing Bus Bar ●
- Copper Bus Bar ●

PARMAR METALS PVT. LTD.
Survey No. 207, Veraval (Shapar),
Dist. Rajkot. (Gujarat) - 360024 INDIA.
E-mail: info@parmarmetal.com | Mo. 9879798895

Earthing Pipe



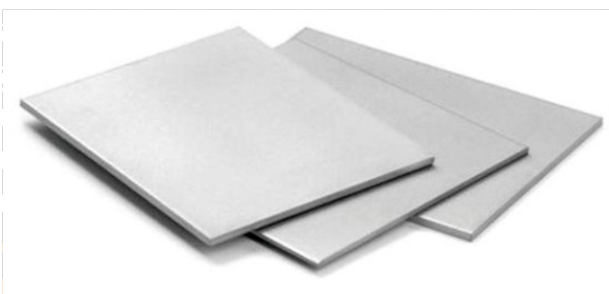
Earthing pipes, also known as grounding rods or earthing electrodes, are essential components in electrical systems to provide a safe path for the dissipation of electrical current into the earth in case of a fault. The material and construction of the earthing pipe must be durable, corrosion-resistant, and effective in ensuring safety. Earthing pipes are typically long, cylindrical structures designed to be driven or buried into the ground. The length of the earthing pipe should ideally be between 2 meters to 3 meters, depending on soil resistivity and the system's power requirements.

An **Earthing Rod** is a metal rod or conductor that is used to connect an electrical system to the earth, providing a path for fault current to safely dissipate into the ground. The primary function of an earthing rod is to ensure safety by directing excess electricity (due to a fault or lightning strike) away from electrical devices, people, and animals. Typically made of copper, galvanized steel, or other conductive metals to ensure good conductivity. The earthing rod is connected to the electrical system, ensuring a safe path for any stray current to travel into the ground. prevents electric shock hazards by redirecting fault currents to the earth.

Earthing Rod



Earthing Plate



An **Earthing Plate** is a metal plate used for grounding or earthing electrical systems. It is typically buried underground and connected to the electrical system to provide a safe path for fault currents to flow into the earth. The purpose of an earthing plate is to ensure the safety of electrical systems and people by preventing electrical shocks and reducing the risk of damage due to fault currents or lightning strikes. The earthing plate works by providing a low-resistance path for fault current to flow from the electrical system into the earth. When a fault occurs, such as a short circuit or lightning strike, the excess electrical energy travels through the conductive plate and is safely dissipated into the earth, preventing damage to the electrical equipment and reducing the risk of electric shocks.

Earthing Bag



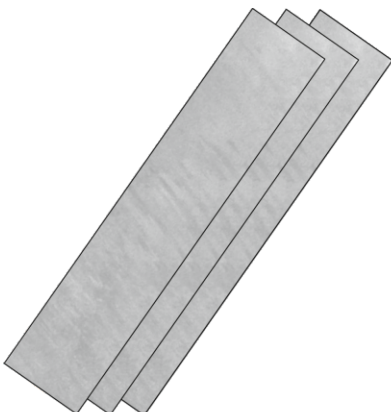
An **Earthing Bag** is an alternative method of grounding electrical systems or providing earthing for certain applications, primarily in environments where traditional earthing methods such as rods or plates may not be ideal or practical. Earthing bags are typically used in areas where soil conductivity is poor or where the installation of a large earthing plate or rod might not be feasible. They provide an efficient way to establish a safe, low-resistance path for electrical fault currents to dissipate into the earth.

Copper Strip

A **Chemical Copper Strip** refers to a strip of copper metal that has been processed using chemical methods, typically through electroplating or other surface treatment processes, to obtain a certain thickness, finish, or coating. These strips are widely used in various industrial applications due to their excellent electrical conductivity, corrosion resistance, and thermal properties. Chemical copper strips are a crucial component in many industries due to their excellent electrical and thermal conductivity, as well as their flexibility and corrosion resistance.



Earthing Strip



An **Earthing Strip** is typically a flat strip or bar made from highly conductive materials like copper or galvanized steel, though aluminum may also be used in some instances. It is connected to electrical systems to safely dissipate stray currents or fault currents into the earth. These strips are part of a larger earthing or grounding system, which is critical for protecting electrical installations, reducing the risk of electrical shock, and preventing fire hazards caused by electrical faults. An earthing strip is a crucial component in electrical safety systems, providing a safe and efficient path for fault currents to flow into the earth. Whether in homes, industrial plants, or power stations, earthing strips are essential for protecting people and equipment from the dangers of electrical faults.

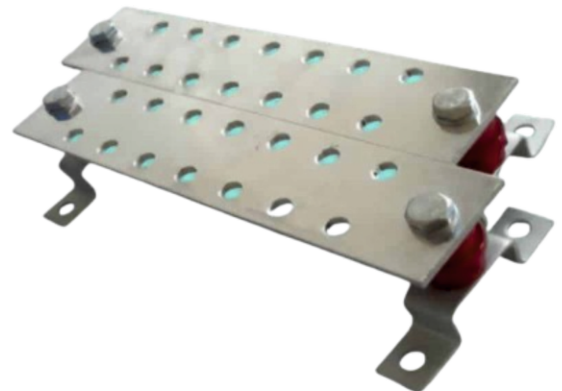
Copper Plate



A **Copper Plate** is a flat sheet or plate made from copper metal, typically used in various industrial, electrical, and artistic applications due to its excellent properties such as electrical conductivity, thermal conductivity, malleability, and resistance to corrosion. Copper plates are produced in different thicknesses, sizes, and finishes to suit specific applications. Copper plates are an essential material in various industries due to their excellent electrical and thermal conductivity, corrosion resistance, and malleability. From electrical and electronic applications to architectural and artistic uses, copper plates provide high-performance solutions for a wide range of applications.

An **Earthing Bus Bar** is a crucial component in electrical systems that ensures safety by providing a common connection point for multiple grounding or earthing conductors. It serves as a central hub where different grounding systems within an electrical installation can be interconnected to create a unified earthing system. Earthing bus bars are primarily used in power distribution systems, electrical panels, and substations to prevent electric shock hazards, safeguard equipment, and ensure compliance with safety standards. An Earthing Bus Bar is a vital safety component in electrical systems, providing a centralized, reliable point for grounding electrical equipment and systems.

Earthing Bus Bar



Copper Bus Bar



A **Copper Bus Bar** is a solid, flat, or rectangular metal bar made from copper that is used to conduct electricity within electrical systems. Copper bus bars serve as the central conductor that distributes electrical power across various components of an electrical network. They are commonly found in electrical panels, switchboards, distribution boards, substations, and various power distribution systems. Known for their high electrical conductivity, copper bus bars are essential components in ensuring the efficient and safe operation of electrical systems. Copper's excellent conductivity reduces the electrical resistance in the bus bars, leading to minimal power losses and ensuring the system operates efficiently, even under heavy load conditions.